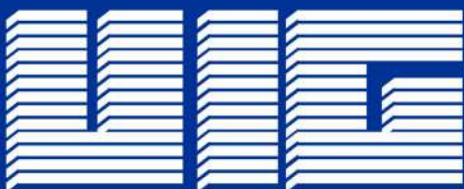
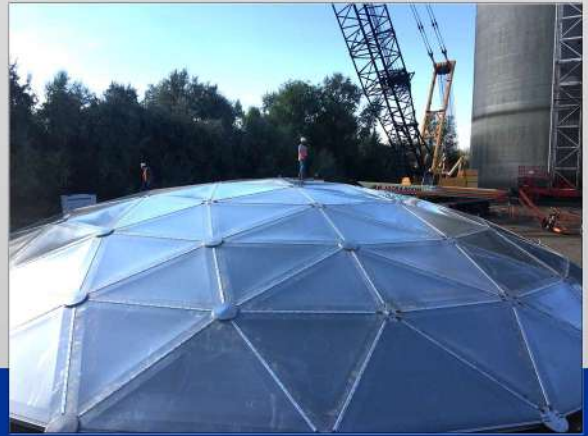


EVERDOME®

Aluminum & Stainless Steel DOMES and COVERS



United Industries Group, Inc.

High Corrosion and UV Resistance -

Will not rust like painted or galvanized carbon steel or degrade like fiberglass.

Industry Standards - AWWA, API, DIN, BS and others.

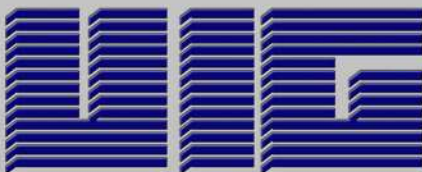
Uniformity - Automated fabrication process guarantees quality of materials supported by international standards.

Lightweight - Aluminum or Stainless Steel.

Competitive Cost to Maintenance Ratio - for aboveground tanks, underground tanks and reservoirs.

Any Shape - Round, Rectangular, Octagonal, Trapezoidal

Any Profile - High, Medium or Low

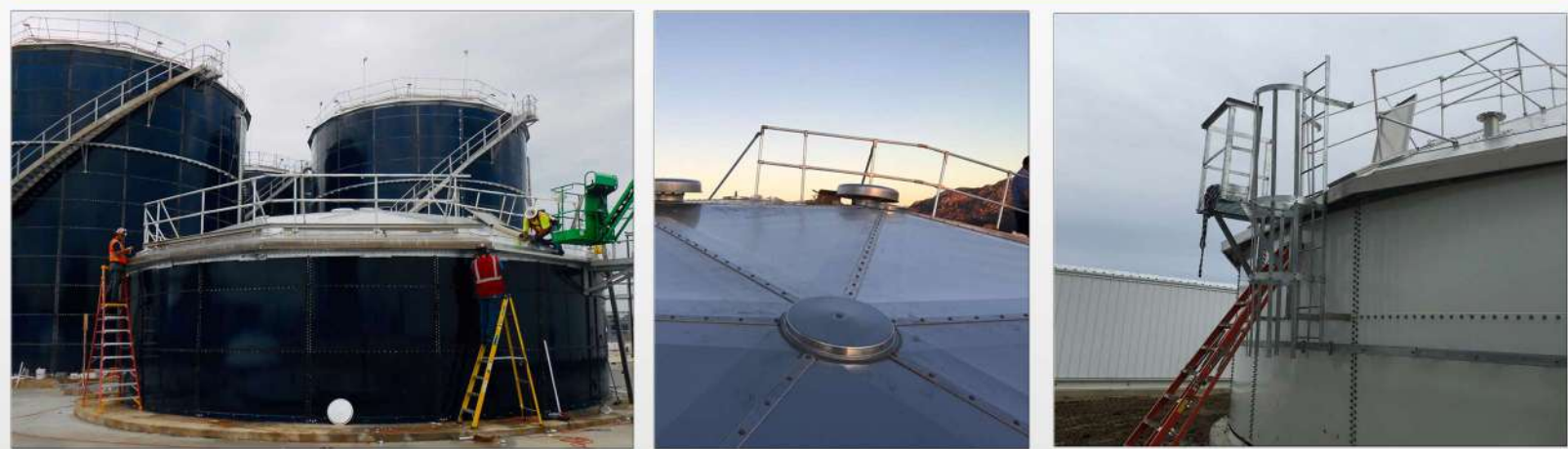


EVERSTORE® DOMES by UIG are built using a triangulated profile system, covered with triangular panels.

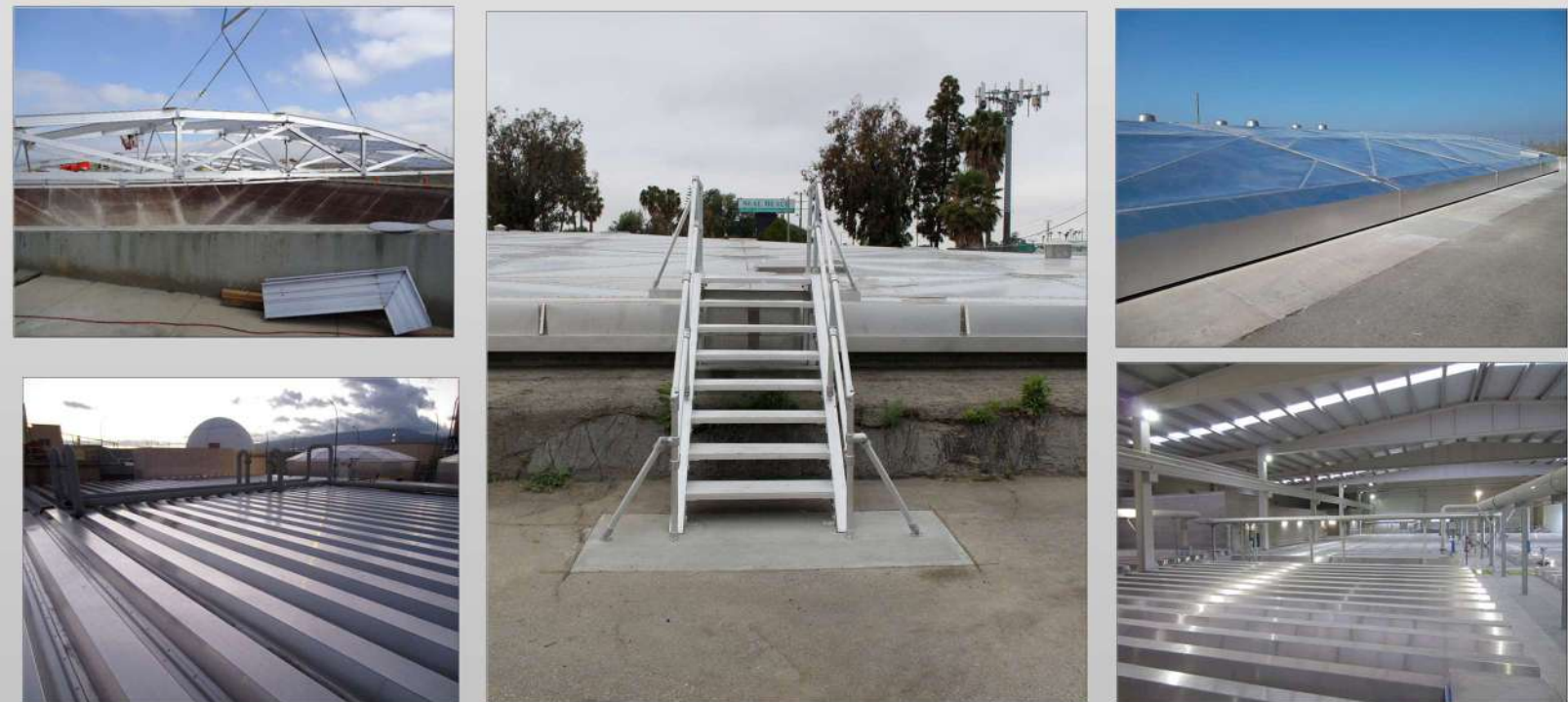
Large Diameters - the clear span design and integral tension ring dome eliminates the need for intermediate columns and reinforcement of tank walls. Available with spans above 350 ft.

Design Flexibility - allows for installation of accessories such as doors, hatches and connections.

Proprietary Software & Design- for domes, covers and architectural structures.



EVERDOME®



EVERSTORE® GEOTRUSS & CLEAR SPAN COVERS - for projects that are square, rectangular or angular in shape. Ideal for covering concrete reservoirs, ponds or other underground storage tanks.

LIGHTWEIGHT, STRONG AND VIRTUALLY MAINTENANCE FREE!

EVERDOME®

Aluminum & Stainless Steel DOMES and COVERS

UIG **EVERDOME®** - offers you a variety of alternative roof structures to give more flexibility when designing your bolted, welded and glass fused-to-steel tanks. They are also an excellent choice for roof repairs on existing steel tanks and concrete reservoirs.

The Geodesic Dome frame is covered with attractive and weather resistant aluminum panels virtually eliminating the need for periodic maintenance, coatings or paint for the life of the structure.

The self supporting design allows for maximum overhead space utilization and interference-free operation for floating roofs and other internals.

Aspect ratio can be selected for your location and application offering a range from a very flat, low profile to a high dome with more internal clearance.

Geotruss and Clear Span Covers are specifically designed for square, rectangular or angular shapes making them the ideal cover for concrete reservoirs, ponds or other in-ground storage tanks.

Cutting edge technology controls odors in industrial environments such as Wastewater Management, Biogas Energy Recovery and Petroleum Plants.

EVERDOME® aluminum is non-corrosive – it never needs coating.

EVERDOME® is lightweight which reduces the loads on fixed roof steel tanks allowing for more economy.

EVERDOME® clear-span design eliminates need for interior rafters which can be damaged by sloshing wave affect during seismic activity.

EVERDOME® protects External Floating Roofs from high wind, rain and snow that can cause EFR sinking, oscillation or vapor emissions.

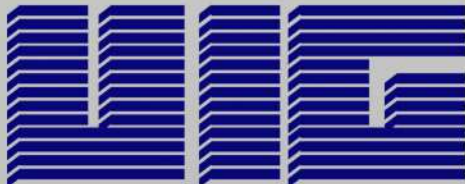
Adding a UIG Everdome® onto the EFR will resolve this issue.

EVERDOME®

APPLICATIONS

Bolted Tanks
Concrete Tanks
Welded Tanks
Sludge Storage
Oil Storage
Aviation Fuel Storage
Fertilizer Storage
Clinker Storage
Petro-chemical Storage
Potable Water Storage
Digesters & Clarifiers

Reservoirs - above & below ground
Wastewater Treatment Plants
Power Generation Plants
Mining Iron Ore and Coal
Shopping Centers
Filtration Plants
Theme Parks
Planetariums
Stadiums
Building Structures - any size
Odor Control



United Industries Group, Inc.
11 Rancho Circle Lake Forest, CA 92630
Phone +1-(949) 759-3200 Fax +1(949) 759-3425
info@unitedind.com www.unitedind.com